

### THE FUTURE IN YOUR HAND

**Age:** Teenager

**Level:** Intermediate (B1) and above

**Time:** 45 minutes

**Activity:** In this lesson, students will:

- » Read a partner's palm and predict their future
- » Write future predictions

**Language focus:** *Will* and *going to* for making predictions

**Materials:** One copy of the worksheet per student; dictionaries

NOTE: This lesson deals with making both positive and negative predictions using palm reading, which may not be suitable for some students or teaching contexts.

#### PROCEDURE

1. Students look at the three pictures in exercise 1 (either individually or as a whole class with the images shown on the board) and guess what they have in common. Explain that they are all different ways of predicting someone's future (*fortune*). The pictures show someone predicting the future by looking into a crystal ball, the future being predicted by looking at the lines on someone's hand and a way of predicting the future by feeling the bumps on a person's head.
2. Ask students if they've ever had their fortune told and encourage them to tell the class what happened. Elicit further ways of telling fortunes. For students who have never had their fortune told, ask if they would like to and if not, why not.
3. Write *palm reading* on the board. Elicit what a *palm* is by showing your hand. Tell students that they are going to read each other's palms.
4. Explain that on each person's hands there are lots of lines. You may want to illustrate with the image from exercise 2. The lines on the left hand represent the characteristics which a person is born with. The lines on the right hand, however, show what you have made of your life and give indications of what you will do in the future.  
  
Inform the students that each line represents an aspect or characteristic of a person's life. See if you can elicit what these may be and write them on the board. Then direct them to exercise 2 and see if students can match up the lines to their meanings. Encourage students to use a dictionary to look up the meaning of any unknown words. Once complete, feed back on the answers as a class.

**Key:**

- *Line of life* – shows the length of your life.
- *Line of heart* – represents how loving you are towards others.
- *Line of fate* – shows how well you will do in business.
- *Line of health* – represents how much fun you will have.
- *Line of intuition* – shows how good you are at making correct decisions.
- *Line of influence* – shows how energetic and strong a character you are.
- *Line of marriage* – represents your husband/wife and how many children you will have.
- *Girdle of Venus* – shows how sensitive and emotional you are.
- *Line of success* – shows your success in life.
- *Line of head* – represents how clearly you see situations and the judgements you make.

5. Check students understand the following vocabulary by drawing a palm on the board and illustrating the words on the palm: *a line, a strong line, a weak line, a break in a line, a clear line, a deep and well-cut line, a branch*.
6. Divide the class into pairs and direct students to the reading text: Predicting the future with palm-reading. Students read the text, using a dictionary to check for any unknown words before asking the teacher. They can look at their own hands as reference.
7. Once students are all familiar with the text, explain that they are going to identify the lines on their partner's right hand and make specific predictions for their partner according to the information in the text. Explain that in order to make predictions, they will need to use *will* or *going to*. For example:  
  
*You have a clear, deep heart line, which means you will have deep affection for the people you like. You don't have a line of intuition, so you are probably not psychic. You have a long life line, but it has a break which shows you are going to have some health problems. However, you will live a long life. Etc.*  
  
As prediction is not 100% accurate, and also in order to be polite, *probably/not* or *may/might/not* can be used.
8. Finally, you can predict that the students will all do some homework! For this, they should write about what they think will happen to them in the future using *will* and *going to*.

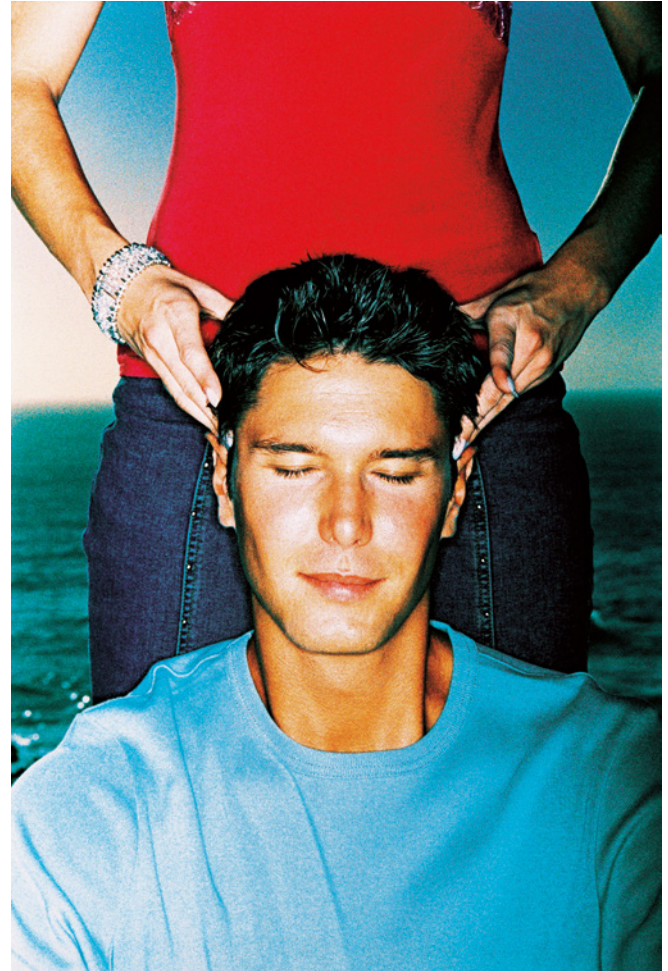
# IMPRESSIONS SIMPRESSIONS SIMPR

## WORKSHEET

### THE FUTURE IN YOUR HAND

one stop english

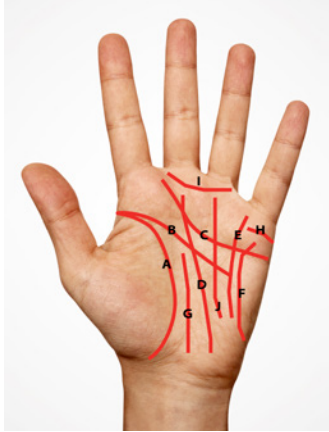
1. Look at the photos below. What do all three pictures have in common?



- Have you ever had your fortune told? What happened?
- If you have never had your fortune told, would you like to?
- If not, why not?

## THE FUTURE IN YOUR HAND

2. Match up the name of each line to its meaning.



- |                         |                            |
|-------------------------|----------------------------|
| <b>A</b> Line of life   | <b>F</b> Line of intuition |
| <b>B</b> Line of head   | <b>G</b> Line of influence |
| <b>C</b> Line of heart  | <b>H</b> Line of marriage  |
| <b>D</b> Line of fate   | <b>I</b> Girdle of Venus   |
| <b>E</b> Line of health | <b>J</b> Line of success   |

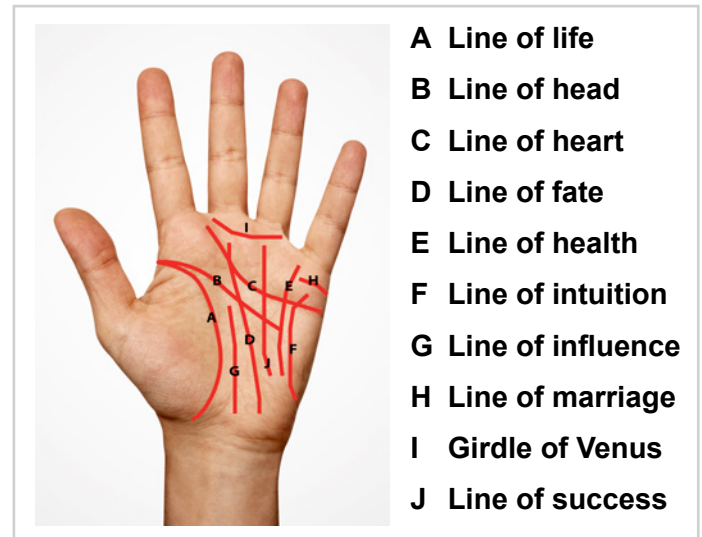
Line of life	represents your husband/wife and how many children you will have.
Line of heart	represents how much fun you will have.
Line of fate	represents how loving you are towards others.
Line of health	shows your success in life.
Line of intuition	shows how well you will do in business.
Line of influence	shows how sensitive and emotional you are.
Line of marriage	shows how good you are at making correct decisions.
Girdle of Venus	shows the length of your life.
Line of success	shows how energetic and strong a character you are.
Line of head	represents how clearly you see situations and the judgements you make.

## THE FUTURE IN YOUR HAND

### Predicting the future with palm-reading

When reading someone's palm, you should look at their right hand. The left hand shows the characteristics which a person is born with and the lines on it generally do not change. The lines on the right hand, however, can change or even disappear completely. This is because these lines show what you have made of your life and therefore give indications of what you will do in the future.

Use the following guide to make predictions about what will happen to you or your partner in the future.



#### Fate

This is sometimes known as the Line of Saturn. A strong fate line which increases in strength indicates success in business. Any breaks or weaknesses in this line indicate problems.

#### Success

This line is not found on every hand and it appears to have no special starting point or length. If you can see it clearly then it indicates success. The longer the line, the greater the success will be.

#### Girdle of Venus

People who possess this line are usually sensitive. If the line is thin in places then the owner can be too emotional at times.

#### Heart

If you see a hand that has a clear heart line, especially if it has branch lines from it, then this person usually has deep affection for the people he or she likes.

#### Head

A clear line means the person has good vision and judgement. If there are breaks then the person is confused or suffers from bad health (head, ear, nose, throat).

#### Intuition

This line is not found on every hand. Psychic people often have this line. It means that the owner is usually right when making decisions.

#### Life

To have a long and healthy life, this line should be deep, clear and well cut. Breaks and weaknesses indicate health problems. The longer the line, the longer the life.

#### Influence

If you can see this line (it's not found on every hand) then it usually means that the owner has a strong constitution. Very energetic people and fighters usually have this line.

#### Health

You usually lose this line after the age of 16. If you still have it after that age then it means you like to have a good time. If you have this line and a strong head line then you have an extremely good memory.

#### Marriage

The strength of this line can show the strength of a person's affections. The branches leading off from it show the number of children you will have. If the line divides into two then you will have a second relationship or marriage.